



## OUR STORY

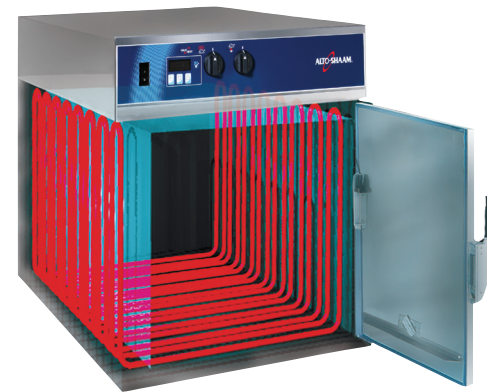
### 1960s

**Jerry Maahs**, founder, seeking a way to keep fried chicken hot for delivery during Wisconsin winters, uses thermal cables to create innovative holding cabinets. Halo Heat® debuts at the 1968 National Restaurant Association Show.



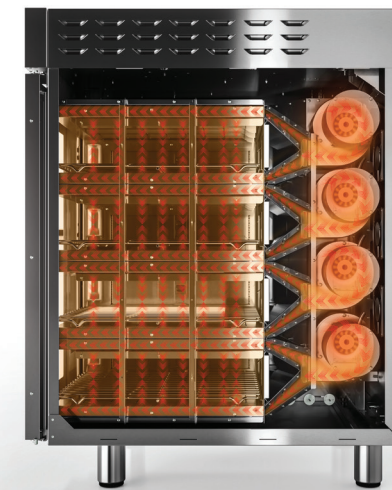
### 1990s

Evolving into a forward-thinking company that offers complete kitchen systems results in dramatic growth and expansion, performing installations everywhere, from cruise lines to Antarctica.



### 1970s

What began as an experiment with the overnight cooking of prime rib leads to the creation of an entirely new category of commercial kitchen equipment: **Cook & Hold ovens with exclusive Halo Heat® technology.**

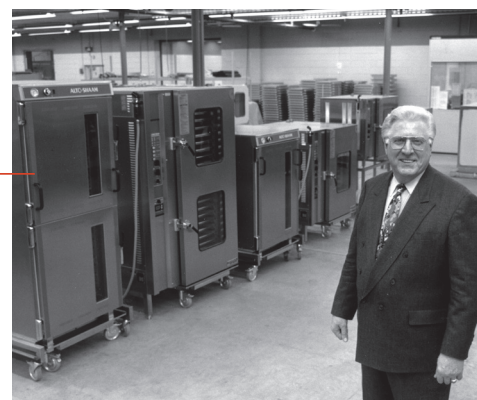


### 2010s

Recognizing the industrychanging potential of Structured Air Technology®, Alto-Shaam partners with Phil McKee, founder and CEO of Appliance Innovation, to develop the revolutionary line of **Vector® Multi-Cook Ovens.**

### 1980s

Seeing a growing need for modern kitchens to become ever more versatile and efficient, Alto-Shaam fills that need with the groundbreaking **Combitherm® oven.**



### 2020s

Alto-Shaam introduces Vector® Multi-Cook Ovens, Cook & Hold Ovens and Smoker Ovens with a new enhanced design, advanced control and a cloud-based remote oven management system, **ChefLinc™.**



# Combi Oven Accessories

Combining multiple cooking functions into a single appliance, Combination ovens from Alto-Shaam keep up with kitchen demand by providing efficient and consistent food production. An indispensable centerpiece of the kitchen, these ovens do the work of a convection oven, grill, steamer, fryer, smoker and more. Make the most of your oven investment and meet the needs of your foodservice operation and your customers—with a variety of accessories. From pans to cleaning supplies to stacking kits, stands and more, we've got you covered.



## Cleaning

Protect your investment with regular cleaning. From sprays to tablets to brushes, we have what you need to properly care for your equipment, ensure high-quality cooking results, keep employees safe and extend equipment lifetime.



### Scale Free [Part #CE-27889]

**PRODUCT DIMENSIONS**  
4 lb. (1.8 kg) bottle

**COMBI MODELS**  
CTX4-10, CTP6-10, CTP10-10, CTP20-10, CTP7-20, CTP10-20,  
CTP20-20, PRODIGI 6-10, PRODIGI 7-20, PRODIGI 10-10,  
PRODIGI 10-20, PRODIGI 20-20, PRODIGI 20-10



### Combiclean Combitabs [Part #CE-28892]

**PRODUCT DIMENSIONS**  
90 tablets per bucket

**COMBI MODELS**  
CTX4-10



### Combiclean Combitabs [Part #CE-46991]

**PRODUCT DIMENSIONS**  
50 tablets per bucket

**COMBI MODELS**  
CTP6-10, CTP10-10, CTP20-10, CTP7-20, CTP10-20, CTP20-20,  
PRODIGI 6-10, PRODIGI 7-20, PRODIGI 10-10, PRODIGI 10-20,  
PRODIGI 20-20, PRODIGI 20-10



### Combitherm Cleaning Liquid [Part #CE-24750]

**PRODUCT DIMENSIONS**  
2.5 gallon jug

**COMBI MODELS**  
CTX4-10, CTP6-10, CTP10-10, CTP20-10, CTP7-20, CTP10-20,  
CTP20-20, PRODIGI 6-10, PRODIGI 7-20, PRODIGI 10-10,  
PRODIGI 10-20, PRODIGI 20-20, PRODIGI 20-10



### Liquid Cleaner [Part #CE-46869]

**PRODUCT DIMENSIONS**  
Refer to Liquid Spec Sheet

**COMBI MODELS**  
CTP6-10, CTP10-10, CTP20-10, CTP7-20, CTP10-20, CTP20-20,  
PRODIGI 6-10, PRODIGI 7-20, PRODIGI 10-10, PRODIGI 10-20,  
PRODIGI 20-20, PRODIGI 20-10



### Brush, Tray Clean-Out [Qty 6 brushes] [Part #BH-38059]

**PRODUCT DIMENSIONS**  
60" x 1/2" (1524 x 13)

**COMBI MODELS**  
CTX4-10, CTP6-10, CTP10-10, CTP20-10, CTP7-20, CTP10-20,  
CTP20-20, PRODIGI 6-10, PRODIGI 7-20, PRODIGI 10-10,  
PRODIGI 10-20, PRODIGI 20-20, PRODIGI 20-10



### Hand Scraper [Part #SC-47403]

**PRODUCT DIMENSIONS**  
8"

**COMBI MODELS**  
CTX4-10, CTP6-10, CTP10-10, CTP20-10, CTP7-20, CTP10-20,  
CTP20-20, PRODIGI 6-10, PRODIGI 7-20, PRODIGI 10-10,  
PRODIGI 10-20, PRODIGI 20-20, PRODIGI 20-10

## Cooking Accessories

Seamlessly execute your menu and introduce new menu items with a variety of cooking accessories. We offer a number of pans, racks, probes and more to help you achieve the menu versatility your customers are looking for.

### Pans

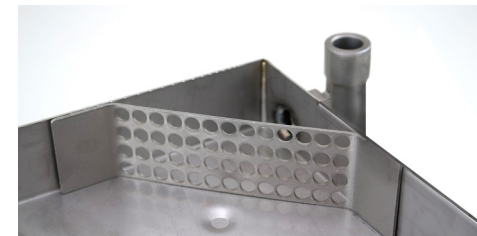
Pans are available in a variety of sizes and configurations to collect grease and drippings during the cooking process.



### Grease Collection Pan [Part #4758]

**PRODUCT DIMENSIONS**  
19-3/4" x 25-1/2" x 1-1/2"  
(501 x 650 x 38)

**COMBI MODELS**  
CTP7-20, CTP10-20, PRODIGI 7-20,  
PRODIGI 10-20



### Drip Pan without Drain [Part #5003463]

**PRODUCT DIMENSIONS**  
12-3/4" x 21-1/4" x 1-1/2"  
(323 x 540 x 38)

**COMBI MODELS**  
CTP6-10, CTP10-10, CTP20-10, PRODIGI 6-10,  
PRODIGI 10-10, PRODIGI 20-10



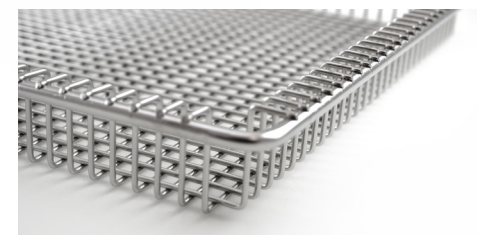
### Grease Collection Pan [Part #14475]

**PRODUCT DIMENSIONS**  
21" x 27-1/8" x 2-3/4"  
(530 x 688 x 70)

**COMBI MODELS**  
CTP6-10, CTP10-10, CTP20-10, PRODIGI 6-10,  
PRODIGI 10-10, PRODIGI 20-10

### Baskets

Add crispy, fried food to your menu without the traditional, oil-heavy deep fryer with our oven fry baskets.



### Fry Basket [Part #BS-26730]

**PRODUCT DIMENSIONS**  
12-3/4" x 20-7/8" x 1-5/8"  
(324 x 529 x 12)

**COMBI MODELS**  
CTX4-10, CTP6-10, CTP10-10, CTP20-10, CTP7-20,  
CTP10-20, PRODIGI 6-10, PRODIGI 7-20,  
PRODIGI 10-10, PRODIGI 10-20, PRODIGI 20-10

## Shelves

Make the most of your oven with a variety of shelves designed to optimize oven space and effortlessly execute every dish.



### Shelf, Stainless Steel Wire [Part #SH-22584]

**PRODUCT DIMENSIONS**  
20-7/8" x 25-1/8"  
[529 x 638]

**COMBI MODELS**  
CTP7-20, CTP10-20, CTP20-20, PRODIGI 7-20,  
PRODIGI 10-20, PRODIGI 20-20



### Shelf, Stainless Steel Wire [Part #SH-2903]

**PRODUCT DIMENSIONS**  
12-3/4" x 20-7/8"  
[324 x 529]

**COMBI MODELS**  
CTP6-10, CTP10-10, CTP20-10, PRODIGI 6-10,  
PRODIGI 10-10, PRODIGI 20-10

## Pizza Screens

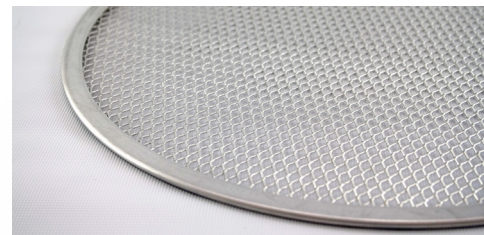
Pizza screens guarantee that pizza is cooked to perfection, with a crispy crust and all, every time.



### Pan, Pizza Screen 14" [Part #PR-47175]

**PRODUCT DIMENSIONS**  
14" [355mm]

**COMBI MODELS**  
CTX4-10, CTP6-10, CTP10-10, CTP20-10, CTP7-20,  
CTP10-20, CTP20-20, PRODIGI 6-10, PRODIGI 7-20,  
PRODIGI 10-10, PRODIGI 10-20, PRODIGI 20-20,  
PRODIGI 20-10



### Pan, Pizza Screen 16" [Part #PR-47176]

**PRODUCT DIMENSIONS**  
16" [406mm]

**COMBI MODELS**  
CTP6-10, CTP10-10, CTP20-10, CTP7-20, CTP10-20,  
CTP20-20, PRODIGI 6-10, PRODIGI 7-20, PRODIGI  
10-10, PRODIGI 10-20, PRODIGI 20-20, PRODIGI 20-10

## Grill Pans and Accessories

Introduce grilled flavors to your menu—adding grill marks to any dish—without the need for labor-intensive grilling.



### Grill Pan, Half Size [Part #PN-39135]

**PRODUCT DIMENSIONS**  
10-7/8" x 16" [276 x 406]

**COMBI MODELS**  
CTP6-10, CTP10-10, CTP20-10, CTP7-20, CTP10-20,  
PRODIGI 6-10, PRODIGI 7-20, PRODIGI 10-10,  
PRODIGI 10-20, PRODIGI 20-10

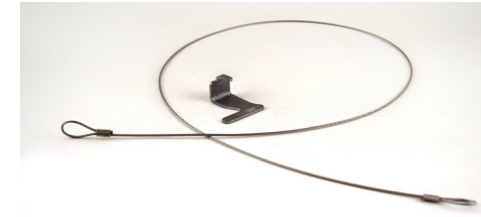
## Grill Pans and Accessories [Continued]



### Grilling Grate [Part #SH-26731]

**PRODUCT DIMENSIONS**  
12-3/4" x 20-7/8"  
[325 x 530]

**COMBI MODELS**  
CTX4-10, CTP6-10, CTP10-10, CTP20-10, CTP7-20,  
CTP10-20, PRODIGI 6-10, PRODIGI 7-20, PRODIGI  
10-10, PRODIGI 10-20, PRODIGI 20-10



### Wire Rope Hook Assembly, Grill Grate Retention [Part #5029725]

**PRODUCT DIMENSIONS**  
11-1/4" [286]

**COMBI MODELS**  
CTP6-10, CTP10-10, CTP20-10, CTP7-20, CTP10-  
20, PRODIGI 6-10, PRODIGI 7-20, PRODIGI 10-10,  
PRODIGI 10-20, PRODIGI 20-10



### Pan, 5" indent Bread Form [Part #PN-47326]

**PRODUCT DIMENSIONS**  
17-3/4" x 13-3/16" x 1-3/16"  
[450 x 335 x 30mm]

**COMBI MODELS**  
CTX4-10, CTP6-10, CTP10-10, CTP20-10, CTP7-20,  
CTP10-20, CTP20-20, PRODIGI 6-10, PRODIGI 7-20,  
PRODIGI 10-10, PRODIGI 10-20, PRODIGI 20-10,  
PRODIGI 20-20



### Half Sheet Egg Pan (9 Count) [Part #PN-47178]

**PRODUCT DIMENSIONS**  
18" x 13"  
[457 x 330mm]

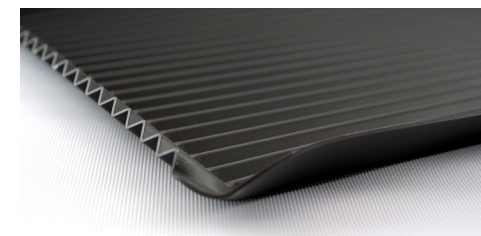
**COMBI MODELS**  
CTX4-10, CTP6-10, CTP10-10, CTP20-10, CTP7-20,  
CTP10-20, CTP20-20, PRODIGI 6-10, PRODIGI 7-20,  
PRODIGI 10-10, PRODIGI 10-20, PRODIGI 20-10,  
PRODIGI 20-20



### Egg Pan (6 Count) [Part #PN-47177]

**PRODUCT DIMENSIONS**  
18" x 11-1/4"  
[457 x 285mm]

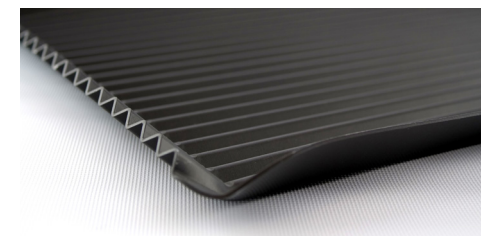
**COMBI MODELS**  
CTX4-10, CTP6-10, CTP10-10, CTP20-10, CTP7-20,  
CTP10-20, CTP20-20, PRODIGI 6-10, PRODIGI 7-20,  
PRODIGI 10-10, PRODIGI 10-20, PRODIGI 20-10,  
PRODIGI 20-20



### CORRUGATED GRILL PAN GN1/1 [Part #PN-47172]

**PRODUCT DIMENSIONS**  
12-3/4" x 21"  
[323 x 533mm]

**COMBI MODELS**  
CTX4-10, CTP6-10, CTP10-10, CTP20-10, CTP7-20,  
CTP10-20, CTP20-20, PRODIGI 6-10, PRODIGI 7-20,  
PRODIGI 10-10, PRODIGI 10-20, PRODIGI 20-10,  
PRODIGI 20-20



### CORRUGATED GRILL PAN 13"x18" [Part #PN-47173]

**PRODUCT DIMENSIONS**  
13" x 18"  
[330 x 457mm]

**COMBI MODELS**  
CTX4-10, CTP6-10, CTP10-10, CTP20-10, CTP7-20,  
CTP10-20, CTP20-20, PRODIGI 6-10, PRODIGI 7-20,  
PRODIGI 10-10, PRODIGI 10-20, PRODIGI 20-10,  
PRODIGI 20-20

## Probes

Ensure accurate cooking temperatures and capture HACCP data with a variety of probes designed to be easily inserted and removed from ovens.



**Single Point Probe**  
[Part #5014297R]

**PRODUCT DIMENSIONS**  
1300 mm

**COMBI MODELS**  
CTX4-10



**Probe**  
[Part #PR-35770]

**PRODUCT DIMENSIONS**  
1000 mm

**COMBI MODELS**  
CTX4-10, CTP6-10, CTPI0-10, CTP20-10, CTP7-20, CTPI0-20, PRODIGI 6-10, PRODIGI 7-20, PRODIGI 10-10, PRODIGI 10-20, PRODIGI 20-10



**Probe, Sous Vide**  
[Part #PR-36576]

**PRODUCT DIMENSIONS**  
1000 mm

**COMBI MODELS**  
CTX4-10, CTP6-10, CTPI0-10, CTP20-10, CTP7-20, CTPI0-20, PRODIGI 6-10, PRODIGI 7-20, PRODIGI 10-10, PRODIGI 10-20, PRODIGI 20-10



**Probe, T shaped**  
[Part #PR-37158]

**PRODUCT DIMENSIONS**  
820 mm

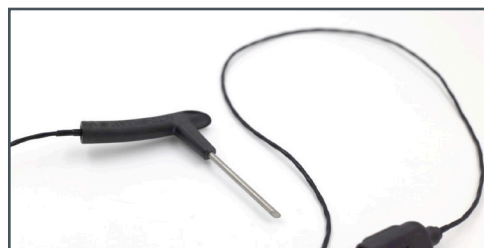
**COMBI MODELS**  
CTP6-10, CTP7-20, PRODIGI 6-10, PRODIGI 7-20,



**Probe**  
[Part #PR-37157]

**PRODUCT DIMENSIONS**  
1000 mm

**COMBI MODELS**  
CTPI0-10, CTP10-20, PRODIGI 10-10, PRODIGI 10-20



**Probe**  
[Part #PR-37156]

**PRODUCT DIMENSIONS**  
1600 mm

**COMBI MODELS**  
CTP 20-10, CTP20-20, PRODIGI 20-10, PRODIGI 20-20



## Protein Racks

Effortlessly roast proteins with racks for poultry, ribs and more available in a number of sizes and configurations.



**6-piece Poultry Roasting Rack**  
[Part #5014438]

**PRODUCT DIMENSIONS**  
12-3/4" x 21" x 6-1/4"  
[322 x 533 x 158]

**COMBI MODELS**  
CTP6-10, CTPI0-10, CTP20-10, CTP7-20, CTPI0-20, PRODIGI 6-10, PRODIGI 7-20, PRODIGI 10-10, PRODIGI 10-20, PRODIGI 20-10



**6-piece Poultry Roasting Rack with drip guard**  
[Part #PN-5020829]

**PRODUCT DIMENSIONS**  
12-3/4" x 21" x 6-3/8"  
[323 x 533 x 162]

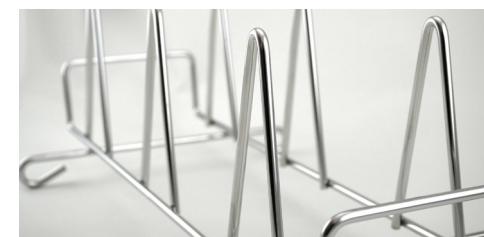
**COMBI MODELS**  
CTP6-10, CTPI0-10, CTP20-10, CTP7-20, CTPI0-20, PRODIGI 6-10, PRODIGI 7-20, PRODIGI 10-10, PRODIGI 10-20, PRODIGI 20-10



**10-piece Poultry Roasting Rack**  
[Part #SH-22634]

**PRODUCT DIMENSIONS**  
12-1/2" x 20-7/8" x 5-1/8"  
[317 x 529 x 131]

**COMBI MODELS**  
CTP20-10, CTP7-20, CTPI0-20, PRODIGI 7-20, PRODIGI 10-20, PRODIGI 20-10



**6-piece Poultry Roasting Rack**  
[Part #SH-23000]

**PRODUCT DIMENSIONS**  
10-1/4" x 19-1/4" x 7"  
[260 x 488 x 177]

**COMBI MODELS**  
CTX4-10, CTP6-10, CTPI0-10, CTP20-10, CTP7-20, CTPI0-20, PRODIGI 6-10, PRODIGI 7-20, PRODIGI 10-10, PRODIGI 10-20, PRODIGI 20-10



**8-piece Poultry Roasting Rack**  
[Part #SH-23619]

**PRODUCT DIMENSIONS**  
10-1/2" x 19-1/2" x 6"  
[266 x 495 x 152]

**COMBI MODELS**  
CTP6-10, CTPI0-10, CTP20-10, CTP7-20, CTPI0-20, PRODIGI 6-10, PRODIGI 7-20, PRODIGI 10-10, PRODIGI 10-20, PRODIGI 20-10

# Wood Chips

Alto-Shaam's optional CombiSmoke® feature allows you to introduce bold flavor to your menu with real smoke from real wood chips available in a variety of flavors and package sizes.



**COMBI MODELS**

CTX4-10, CTP6-10, CTP10-10, CTP7-20, CTP10-20, CTP20-10, CTP20-20, PRODIGI 6-10, PRODIGI 10-10, PRODIGI 7-20, PRODIGI 10-20, PRODIGI 20-10, PRODIGI 20-20



**COMBI MODELS**

CTX4-10, CTP6-10, CTP10-10, CTP7-20, CTP10-20, CTP20-10, CTP20-20, PRODIGI 6-10, PRODIGI 10-10, PRODIGI 7-20, PRODIGI 10-20, PRODIGI 20-10, PRODIGI 20-20



**COMBI MODELS**

CTX4-10, CTP6-10, CTP10-10, CTP7-20, CTP10-20, CTP20-10, CTP20-20, PRODIGI 6-10, PRODIGI 10-10, PRODIGI 7-20, PRODIGI 10-20, PRODIGI 20-10, PRODIGI 20-20



**COMBI MODELS**

CTX4-10, CTP6-10, CTP10-10, CTP7-20, CTP10-20, CTP20-10, CTP20-20, PRODIGI 6-10, PRODIGI 10-10, PRODIGI 7-20, PRODIGI 10-20, PRODIGI 20-10, PRODIGI 20-20



**COMBI MODELS**

CTX4-10, CTP6-10, CTP10-10, CTP7-20, CTP10-20, CTP20-10, CTP20-20, PRODIGI 6-10, PRODIGI 10-10, PRODIGI 7-20, PRODIGI 10-20, PRODIGI 20-10, PRODIGI 20-20

**Cherry** North and South American Customers

2 lb Pack	Part #WC-22540
1.25 cu ft	Part #WC-22541
2.5 cu ft	Part #WC-37746

**Customers Outside of North and South America**

0.9 kg	Part #WC-49352
9 kg	Part #WC-49353

**Apple** North and South American Customers

2 lb Pack	Part #WC-22542
1.25 cu ft	Part #WC-22543
2.5 cu ft	Part #WC-37747

**Customers Outside of North and South America**

0.9 kg	Part #WC-49354
9 kg	Part #WC-49355

**Hickory** North and South American Customers

2 lb Pack	Part #WC-2828
1.25 cu ft	Part #WC-2829
2.5 cu ft	Part #WC-37749

**Customers Outside of North and South America**

0.9 kg	Part #WC-49358
9 kg	Part #WC-49359

**Maple** North and South American Customers

2 lb Pack	Part #WC-22544
1.25 cu ft	Part #WC-22545
2.5 cu ft	Part #WC-37748

**Beech**

**Customers Outside of North and South America**

0.9 kg	Part #WC-49356
9 kg	Part #WC-49357



## Grease Filters

Comply with standard codes and local jurisdictions with the addition grease filters. We offer a number of filters designed to eliminate harmful, grease-laden air from reentering the kitchen.



**Filter, CT, Grease**  
[Part #FI-46995]

**PRODUCT DIMENSIONS**  
10" x 20" x 2" [244 x 508 x 50]

**COMBI MODELS**  
CTP7-20, CTP10-20, PRODIGI 10-20,  
PRODIGI 7-20



**Filter, CT, Grease**  
[Part #FI-46994]

**PRODUCT DIMENSIONS**  
10" x 16" x 2" [244 x 406 x 50]

**COMBI MODELS**  
CTP6-10, CTP10-10, PRODIGI 6-10,  
PRODIGI 10-10



**Filter, UI Class 1 Fire Rating**  
[Part #FI-36620]

**PRODUCT DIMENSIONS**  
8.25" x 20" x 2" [209 x 508 x 50]

**COMBI MODELS**  
CTP7-20, CTP10-20, PRODIGI 7-20,  
PRODIGI 10-20



**Filter, UI Class 1 Fire Rating**  
[Part #FI-24114]

**PRODUCT DIMENSIONS**  
8.5" x 16" x 2" [215 x 406 x 50]

**COMBI MODELS**  
CTP6-10, CTP10-10, PRODIGI 6-10,  
PRODIGI 10-10

## Miscellaneous Hardware

Optimize your kitchen layout and streamline processes with a variety of stands and miscellaneous hardware. From grease collection carts and containers to equipment stands, we help ensure your foodservice operation is set up for success.



**Poultry Grease Container**  
[Part #5014846]

**PRODUCT DIMENSIONS**  
10" x 16" x 2"  
[244 x 396 x 50]

**COMBI MODELS**  
CTP6-10, CTP10-10, CTP20-10, CTP7-20, CTP10-20,  
CTP20-20, PRODIGI 6-10, PRODIGI 7-20, PRODIGI 10-10,  
PRODIGI 10-20, PRODIGI 20-20, PRODIGI 20-10



**Gas Line Quick Disconnect**  
[Part #CR-33543]

**PRODUCT DIMENSIONS**  
3/4" x 66-1/4"  
[19 x 1682]

**COMBI MODELS**  
CTP6-10, CTP10-10, CTP20-10, CTP7-20, CTP10-20,  
CTP20-20, PRODIGI 6-10, PRODIGI 7-20, PRODIGI 10-10,  
PRODIGI 10-20, PRODIGI 20-20, PRODIGI 20-10

## Water Treatment

Protect your Combitherm oven investment and extend equipment lifetime with a reverse osmosis system. Proper water treatment helps eliminate labor and costs associated with frequent oven maintenance due to scale build up and corrosion of equipment.



### Pentair Everpure 175 CR/5 [Part #5031203]

**PRODUCT DIMENSIONS**  
20"h x 18.3"w x 6"d

**COMBI MODELS**  
CTX4-10, CTP6-10, CTP10-10, CTP7-20, PRODIGI 6-10,  
PRODIGI 7-20, PRODIGI 10-10



### Pentair Everpure 175 CR/10 [Part #5031204]

**PRODUCT DIMENSIONS**  
20"h x 18.3"w x 6"d

**COMBI MODELS**  
CTP10-20, CTP20-10, CTP20-20, PRODIGI 10-20,  
PRODIGI 20-20, PRODIGI 20-10



### Pentair Everpure 175 CR/16 [Part #5031205]

**PRODUCT DIMENSIONS**  
20"h x 18.3"w x 6"d

**COMBI MODELS**  
CTP10-20, CTP20-10, CTP20-20, PRODIGI 10-20,  
PRODIGI 20-20, PRODIGI 20-20



### Pentair Everpure 175 CR/5 (For Stacked Application) [Part #5031206]

**PRODUCT DIMENSIONS**  
20"h x 18.3"w x 6"d

**COMBI MODELS**  
CTX4-10 over CTX4-10



### Pentair Everpure 175 CR/10 (For Stacked Application) [Part #5031207]

**PRODUCT DIMENSIONS**  
20"h x 18.3"w x 6"d

**COMBI MODELS**  
CTX4-10 over CTX4-10, CTP6-10 over CTP7-20,  
CTP6-10 over CTP10-10, CTP7-20 over CTP7-20,  
PRODIGI 6-10 over PRODIGI 7-20, PRODIGI 6-10 over  
PRODIGI 10-10, PRODIGI 7-20 over PRODIGI 7-20,



### Pentair Everpure 175 CR/16 (For Stacked Application) [Part #5031208]

**PRODUCT DIMENSIONS**  
20"h x 18.3"w x 6"d

**COMBI MODELS**  
CTP6-10 over CTP6-10, CTP7-20 over CTP7-20  
CTP6-10 over CTP7-20, CTP6-10 over CTP10-10,  
PRODIGI 7-20 over PRODIGI 7-20, PRODIGI 6-10 over  
PRODIGI 7-20, PRODIGI 6-10 over PRODIGI 6-10



### Pentair Everpure Replacement Cartridge 10" [Part #FI-46937]

**PRODUCT DIMENSIONS**  
12.85"h x 3.9"w x 3.9"d

**COMBI MODELS**  
All Models



### Pentair ILMA-10.14 Replacement Cartridge 10" [Part #FI-46939]

**PRODUCT DIMENSIONS**  
10"h x 3.9"w x 3.9"d

**COMBI MODELS**  
All Models



### Pentair QT Replacement Cartridge 10" [Part #FI-46940]

**PRODUCT DIMENSIONS**  
12.75"h x 4"w x 4"d

**COMBI MODELS**  
All Models



### Pentair Everpure AMS-QT15 Membrane Replacement Cartridge [Part #FI-46938]

**PRODUCT DIMENSIONS**  
12.75"h x 4"w x 4"d

**COMBI MODELS**  
All Models

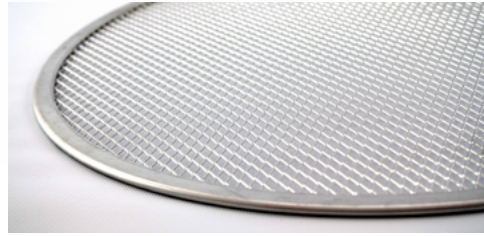
# Multi-Cook Oven Accessories

Delivering an unmatched volume and variety of food, With exclusive Structured Air Technology® offer up to four ovens in one—each chamber with independent temperature, fan speed and cook time controls. This individual chamber design allows for simultaneous, high-quality cooking with zero flavor transfer between chambers. Achieve ultimate menu variety and set your foodservice operation up for success with an assortment of accessories for cooking, cleaning and more.



## Pizza Screens

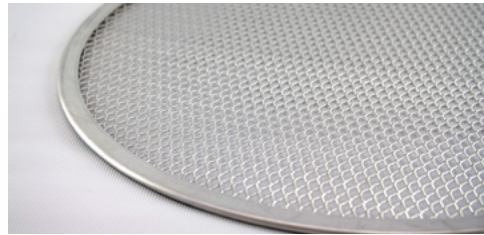
Pizza screens guarantee that pizza is cooked to perfection, with a crispy crust and all, every time.



**Pan, Pizza Screen 14"**  
[Part #PR-47175]

**PRODUCT DIMENSIONS**  
14" [355mm]

**MODELS**  
CMC-H2H, CMC-H3H, VMC-H2, VMC-H2H,  
VMC-H3, VMC-H3H, VMC-H4, VMC-H4H,  
VMC-F3, VMC-F4



**Pan, Pizza Screen 16"**  
[Part #PR-47176]

**PRODUCT DIMENSIONS**  
16" [406mm]

**MODELS**  
VMC-F3, VMC-F4, VMC-H2HW,  
VMC-H3HW

## Probes [Available in Vector F and Converge only]

Ensure accurate cooking temperatures and capture HACCP data with a variety of probes designed to be easily inserted and removed from ovens.



**Probe**  
[Part #PR-35770]

**PRODUCT DIMENSIONS**  
1000 mm

**MODELS**  
VMC-F3, VMC-F4



**Probe**  
[Part #PR-35487]

**PRODUCT DIMENSIONS**  
1600 mm

**MODELS**  
VMC-F3, VMC-F4



**Probe**  
[Part #PR-36201]

**PRODUCT DIMENSIONS**  
820 mm

**MODELS**  
VMC-F3, VMC-F4



**Probe**  
[Part #PR-47968]

**PRODUCT DIMENSIONS**  
460 mm

**MODELS**  
CMC-H2H, CMC-H3H

## Shelves

Make the most of your oven with a variety of shelves designed to optimize oven space and effortlessly execute every dish.



**Wire shelf, Half-Size Sheet Pan**  
[Part #SH-37662]

**PRODUCT DIMENSIONS**  
18-1/2" x 14-3/4" x 1"  
[470 x 374 x 25]

**MODELS**  
VMC-H2, VMC-H3, VMC-H4



**Wire Shelf, Hotel Pan**  
[Part #SH-39077]

**PRODUCT DIMENSIONS**  
20-1/2" x 14-3/4" x 1"  
[520 x 374 x 25]

**MODELS**  
VMC-H2H, VMC-H3H, VMC-H4H



**Cooking Grate, Hotel Pan**  
[Part #SH-39078]

**PRODUCT DIMENSIONS**  
9 3/4" x 17-15/16"  
[247 x 431]

**MODELS**  
VMC-H2H, VMC-H3H, VMC-H4H



**Cooking Grate, Half Pan**  
[Part #SH-39087]

**PRODUCT DIMENSIONS**  
11 3/4" x 16-1/2"  
[298 x 419]

**MODELS**  
VMC-H2, VMC-H3, VMC-H4



**Wire Rack**  
[Part #SH-39201]

**PRODUCT DIMENSIONS**  
20-5/8" x 26-3/4" x 1"  
[524 x 679 x 24]

**MODELS**  
VMC-F3, VMC-F4



**Wire Rack**  
[Part #SH-46478]

**PRODUCT DIMENSIONS**  
16.75" x 20.5" x .75"  
[425 x 521 x 19]

**MODELS**  
VMC-H2HW, VMC-H3HW

## Cleaning

Protect your investment with regular cleaning. From sprays to tablets to brushes, we have what you need to properly care for your equipment, ensure high-quality cooking results, keep employees safe and extend equipment lifetime.



### Non-Caustic Oven Cleaner [Part #CE-46828]

**PRODUCT DIMENSIONS**  
[Refer to Liquid Spec Sheet](#)

**MODELS**  
VMC-H2, VMC-H2H, VMC-H3, VMC-H3H,  
VMC-H4, VMC-H4H, VMC-F3, VMC-F4,  
VMC-H2HW, VMC-H3HW



### Non-Caustic Oven Cleaner (case of six 6) [Part #CE-46829]

**PRODUCT DIMENSIONS**  
[Refer to Liquid Spec Sheet](#)

**MODELS**  
VMC-H2, VMC-H2H, VMC-H3, VMC-H3H,  
VMC-H4, VMC-H4H, VMC-F3, VMC-F4,  
VMC-H2HW, VMC-H3HW



### Non-Caustic Oven Cleaner [Part #CE-49338]

**PRODUCT DIMENSIONS**  
[Refer to Cleaning & Care sheet](#)

**MODELS**  
CMC-H2H, CMC-H3H



### Oven Descaler [Part #CE-47859]

**PRODUCT DIMENSIONS**  
[Refer to Cleaning & Care sheet](#)

**MODELS**  
CMC-H2H, CMC-H3H



### Oven Decarbonizer & Degreaser [Part #CE-48623]

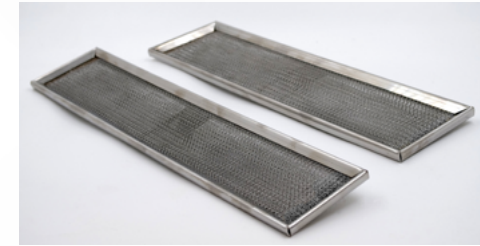
**PRODUCT DIMENSIONS**  
[Refer to Cleaning & Care sheet](#)

**MODELS**  
CMC-H2H, CMC-H3H

## Cooking Accessories

Seamlessly execute your menu and introduce new menu items with a variety of cooking accessories. We offer a number of pans, racks, probes and more to help you achieve the menu versatility your customers are looking for.

### Filters



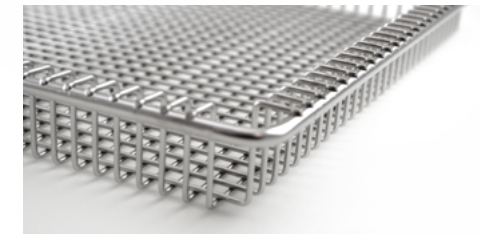
#### Kit, Filters, Internal Cavity [Order 1 Per Cavity] [Kit Part #5027119]

**PRODUCT DIMENSIONS**  
Side 15" x 3" x 1-5/8" (379 x 90 x 42)  
Back 13-1/2" x 3-1/2" x 1-5/8"  
(343 x 89 x 42)

**MODELS**  
VMC-H2, VMC-H2H, VMC-H3,  
VMC-H3H, VMC-H4, VMC-H4H,  
VMC-H3HW, VMC-H2HW

### Baskets

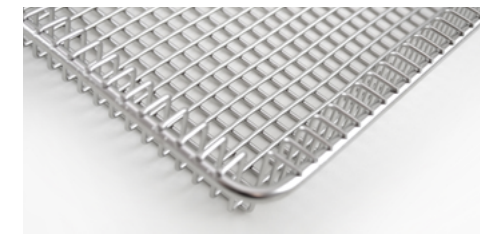
Add crispy, fried food to your menu without the traditional, oil-heavy deep fryer with our oven fry baskets.



#### Fry Basket [Part #BS-26730]

**PRODUCT DIMENSIONS**  
12-3/4" x 20-7/8" x 1-5/8"  
(324 x 529 x 42)

**MODELS**  
CMC-H2H, CMC-H3H, VMC-H3H, VMC-H4H



#### Fry Basket [Part #BS-46316]

**PRODUCT DIMENSIONS**  
12-3/4" x 18" x 1-5/8"  
(324 x 457 x 42)

**MODELS**  
CMC-H2H, CMC-H3H, VMC-H2,  
VMC-H2H, VMC-H3, VMC-H3H,  
VMC-H4, VMC-H4H





## Grill Pans and Accessories

Introduce grilled flavors to your menu—adding grill marks to any dish—without the need for traditional, labor-intensive grilling.



### Grill Pan, Half Size [Part #PN-39135]

**PRODUCT DIMENSIONS**  
11" x 16"  
[276 x 406]

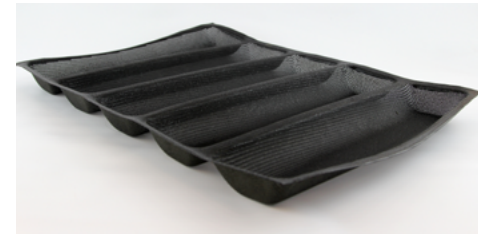
**MODELS**  
CMC-H2H, CMC-H3H, VMC-H2, VMC-H2H, VMC-H3, VMC-H3H, VMC-H4, VMC-H4H, VMC-F3, VMC-F4



### Grill Pan, Full Size [Part #PN-39474]

**PRODUCT DIMENSIONS**  
18" x 26"  
[448 x 660]

**MODELS**  
VMC-F3, VMC-F4



### Pan, 5" indent Bread Form [Part #PN-47326]

**PRODUCT DIMENSIONS**  
17-3/4" x 13-3/16" x 1-3/16"  
[450 x 335 x 30mm]

**MODELS**  
CMC-H2H, CMC-H3H, VMC-H2, VMC-H2H, VMC-H3, VMC-H3H, VMC-H4, VMC-



### Half Sheet Egg Pan [9 Count] [Part #PN-47178]

**PRODUCT DIMENSIONS**  
18" x 13"  
[457 x 330mm]

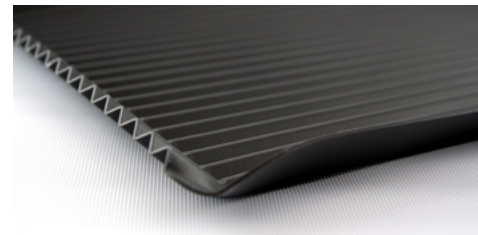
**MODELS**  
CMC-H2H, CMC-H3H, VMC-H2, VMC-H2H, VMC-H3, VMC-H3H, VMC-H4, VMC-H4H, VMC-F3, VMC-F4



### Egg Pan [6 Count] [Part #PN-47177]

**PRODUCT DIMENSIONS**  
18" x 11-1/4"  
[457 x 285mm]

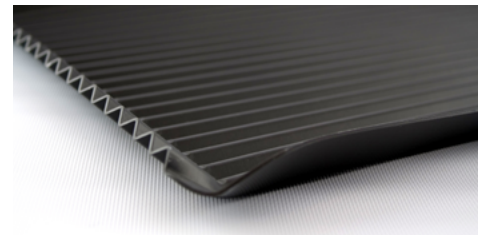
**MODELS**  
CMC-H2H, CMC-H3H, VMC-H2, VMC-H2H, VMC-H3, VMC-H3H, VMC-H4, VMC-H4H, VMC-F3, VMC-F4



### CORRUGATED GRILL PAN GN1/1 [Part #PN-47172]

**PRODUCT DIMENSIONS**  
12-3/4" x 21"  
[323 x 533mm]

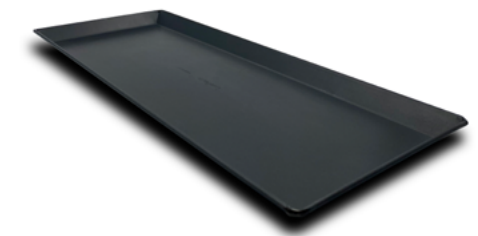
**MODELS**  
CMC-H2H, CMC-H3H, VMC-H2H, VMC-H3H, VMC-H4H, VMC-F3, VMC-F4



### CORRUGATED GRILL PAN 13"x18" [Part #PN-47173]

**PRODUCT DIMENSIONS**  
13" x 18"  
[330 x 457mm]

**MODELS**  
CMC-H2H, CMC-H3H, VMC-H2, VMC-H2H, VMC-H3, VMC-H3H, VMC-H4, VMC-H4H, VMC-F3, VMC-F4



### FLATBREAD PAN 5"x15" [Part #PN-48094]

**PRODUCT DIMENSIONS**  
5" x 15"  
[127 x 381mm]

**MODELS**  
CMC-H2H, CMC-H3H, VMC-H2, VMC-H2H, VMC-H3, VMC-H3H, VMC-H4, VMC-H4H, VMC-H2HW, VMC-H3HW, VMC-F3, VMC-F4



## Cook & Hold | Smoker Oven Accessories

Featuring game changing Halo Heat® technology, Cook & Hold Ovens are designed to produce better food quality and higher yields. Gentle, radiant heat evenly surrounds food without the use of extremely hot elements, added humidity or fans. Known as one of the most versatile and energy efficient pieces of equipment in the industry, these ovens are engineered to maximize return on investment. Further your investment with a number of accessories that enhance cooking, ease of cleaning and more for foodservice operations.

## 🔥 Cleaning

Protect your investment with regular cleaning. From sprays to tablets to brushes, we have what you need to properly care for your equipment, ensure high-quality cooking results, keep employees safe and extend equipment lifetime.



### Non-Caustic Oven Cleaner

[Part #CE-46828]

#### PRODUCT DIMENSIONS

Refer to Liquid Spec Sheet

#### COOK & HOLD MODELS

300-TH, 500-TH, 500-TH II, 750-TH, 750-TH II, 1000-TH, 1000-TH I, 1000-TH II, 1200-TH

#### SMOKER MODELS

767-SK, 767-SK III, 750-SK, 1000-SK I, 1000-SKIII, 1000-SK, 1200-SK III, 1750-SK, 1767-SK, 1767 SK III



### Non-Caustic Oven Cleaner [case of six 6]

[Part #CE-46829]

#### PRODUCT DIMENSIONS

Refer to Liquid Spec Sheet

#### COOK & HOLD MODELS

300-TH, 500-TH, 500-TH II, 750-TH, 750-TH II, 1000-TH, 1000-TH I, 1000-TH II, 1200-TH, 1750-TH

#### SMOKER MODELS

767-SK, 767-SK III, 750-SK, 1000-SK I, 1000-SKIII, 1000-SK, 1200-SK III, 1750-SK, 1767-SK, 1767 SK III

## 🍳 Cooking Accessories

Seamlessly execute your menu and introduce new menu items with a variety of cooking accessories. We offer a number of pans, racks, probes and more to help you achieve the menu versatility your customers are looking for.

## Carving Holders

Carving holders hold a variety of large cuts of meat in place for high-quality cooking, carving and service to customers.



### Steamship Cafeteria Round Holder

#### CLASSIC COOK & HOLD

[Part #4459]

500-TH II, 750-TH II, 1000-TH II, 1000-TH I

#### PRODUCT DIMENSIONS

12-3/4" x 20-3/4" x 3-1/4"  
[323 x 527 x 81]

#### NEW COOK & HOLD | SMOKER

[Part #4459]

500-TH II, 750-TH, 750-SK, 1000-TH, 1000-SK, 1200-TH, 1200-SK, 1750-TH, 1750-SK

#### PRODUCT DIMENSIONS

12-3/4" x 20-3/4" x 3-1/4"  
[323 x 527 x 81]



### Prime Rib Holder

#### CLASSIC COOK & HOLD | SMOKER

[Part #HL-2635]

500-TH II, 750-TH II, 1000-TH I, 1000-TH II

#### PRODUCT DIMENSIONS

9" x 11-7/8" x 7"  
[228 x 301 x 176]

#### NEW COOK & HOLD | SMOKER

[Part #HL-2635]

300-TH, 500-TH, 750-TH, 750-SK, 1000-TH, 1000-SK, 1200-TH, 1200-SK, 1750-TH, 1750-SK

#### PRODUCT DIMENSIONS

9" x 11-7/8" x 7"  
[228 x 301 x 176]



## Pans

Pans are available in a variety of sizes and configurations to collect grease and drippings during the cooking process.



### Drip Pan without Drain

**NEW COOK & HOLD**

[Part #PN-37119]  
300-TH

**PRODUCT DIMENSIONS**

12-4/5" x 20-3/8" x 3/4" [323 x 527 x 31]



### Drip Pan with Drain

**CLASSIC COOK & HOLD**

[Part #14813]  
500-TH II

**PRODUCT DIMENSIONS**

13-7/8" x 21-1/8" x 1-1/2" [352 x 536 x 380]

**NEW COOK & HOLD**

[Part #5027714]  
500-TH

**PRODUCT DIMENSIONS**

11" x 21-3/8" x 2-3/8" [281 x 542 x 60]



### Drip Pan with Drain

**CLASSIC COOK & HOLD | SMOKER**

[Part #14831]  
750-TH II, 767-SK, 1767-SK

**PRODUCT DIMENSIONS**

21-3/4" x 26" x 1-5/8" [552 x 660 x 41]

**NEW COOK & HOLD | SMOKER**

[Part #5027713]  
750-TH, 750-SK, 1750-TH, 1750-SK

**PRODUCT DIMENSIONS**

18-1/2" x 26-3/8" x 2-3/8" [472 x 670 x 60]



### Drip Pan with Drain

**CLASSIC COOK & HOLD | SMOKER**

[Part #5005616]  
1000-TH II, 1000-TH I, 1000-SK I, 1000-SK II

**PRODUCT DIMENSIONS**

18-1/4" x 24-1/5" x 2" [463 x 614 x 49]

**NEW COOK & HOLD | SMOKER**

[Part #502589]  
1000-TH, 1200-TH, 1000-SK, 1200-SK

**PRODUCT DIMENSIONS**

15-1/2" x 26-3/8" x 2-3/8" [345 x 670 x 60]



### Drip Pan without Drain

**CLASSIC COOK & HOLD | SMOKER**

[Part #11906]  
1000-TH II, 1000-TH I, 1000-SK I, 1000-SK II

**PRODUCT DIMENSIONS**

18-1/2" x 26" x 1-7/8" [469 x 660 x 47]

**NEW COOK & HOLD | SMOKER**

[Part #1034371]  
1000-TH, 1200-TH, 1000-SK, 1200-SK

**PRODUCT DIMENSIONS**

15-1/2" x 25-3/4" x 2" [469 x 660 x 50]



### Drip Pan without Drain

**CLASSIC COOK & HOLD**

[Part #11898]  
500-TH II

**PRODUCT DIMENSIONS**

13-3/4" x 21" x 1-1/2" [349 x 533 x 38]

**NEW COOK & HOLD**

[Part #1034369]  
500-TH

**PRODUCT DIMENSIONS**

11" x 20-3/4" x 2" [354 x 527 x 50]



### Drip Pan without Drain

**CLASSIC COOK & HOLD | SMOKER**

[Part #1014684]  
750-TH II, 767-SK, 1767-SK

**PRODUCT DIMENSIONS**

21-5/8" x 25-7/8" x 2" [657 x 549 x 50]

**NEW COOK & HOLD | SMOKER**

[Part #1034370]  
750-TH, 750-SK

**PRODUCT DIMENSIONS**

18-1/2" x 25-3/4" x 2" [472 x 654 x 50]



## Protein Racks

Effortlessly roast proteins with racks for poultry, ribs & more.



### 6-piece Poultry Roasting Rack

**CLASSIC COOK & HOLD**  
[Part #5003463]

500-TH II, 750-TH II, 1000-TH II, 1200-TH II

**PRODUCT DIMENSIONS**

12-3/4" x 21" x 6-1/4"  
[323 x 533 x 158]

**NEW COOK & HOLD**  
[Part #5003463]

500-TH, 750-TH, 1000-TH, 1200-TH, 1750-TH

**PRODUCT DIMENSIONS**

12-3/4" x 21" x 6-1/4"  
[323 x 533 x 158]



### 6-piece Poultry Roasting Rack with drip guard

**CLASSIC COOK & HOLD**  
[Part #PN-5020829]

500-TH II, 750-TH II, 1000-TH II, 1200-TH II

**PRODUCT DIMENSIONS**

12-3/4" x 21" x 6-1/4"  
[323 x 533 x 158]

**NEW COOK & HOLD**  
[Part #PN-5020829]

500-TH, 750-TH, 1000-TH, 1200-TH, 1750-TH

**PRODUCT DIMENSIONS**

12-3/4" x 21" x 6-1/4"  
[323 x 533 x 158]



### Shelf, Stainless Steel, Rib Rack

**CLASSIC SMOKER**  
[Part #SH-2743]

767-SK, 1767-SK

**PRODUCT DIMENSIONS**

21" x 24-3/4" x 2-1/2"  
[533 x 755 x 63]

**NEW SMOKER**  
[Part #SH-2743]

750-SK, 1750-SK

**PRODUCT DIMENSIONS**

21" x 24-3/4" x 2-1/2"  
[533 x 755 x 63]



### Shelf, Stainless Steel, Rib Rack

**CLASSIC SMOKER**  
[Part #SH-29474]

1000-SK/I, 1000-SK/II

**PRODUCT DIMENSIONS**

18" x 24-3/4" x 2"  
[457 x 628 x 51]

**NEW SMOKER**  
[Part #SH-29474]

1000-SK, 1200-SK

**PRODUCT DIMENSIONS**

18" x 24-3/4" x 2"  
[457 x 628 x 51]



### Shelf, Stainless Steel, Flat Wire

**CLASSIC COOK & HOLD | SMOKER**  
[Part #SH-2324]

767-SK, 1767-SK, 750-TH/II

**PRODUCT DIMENSIONS**

21 1/16" x 24 3/4"

**NEW COOK & HOLD | SMOKER**  
[Part #2324]

750-TH, 750-SK, 1750-TH, 1750-SK

**PRODUCT DIMENSIONS**

21 1/16" x 24 3/4"



### Shelf, Stainless Steel, Flat Wire

**CLASSIC COOK & HOLD | SMOKER**  
[Part #SH-2325]

1000-TH/I, 1000-TH/II, 1000-SK/I, 1000-SK/II

**PRODUCT DIMENSIONS**

17 15/16" x 24 3/4"

**NEW COOK & HOLD | SMOKER**  
[Part #2325]

1000-TH, 1200-TH, 1000-SK, 1200-SK

**PRODUCT DIMENSIONS**

17 15/16" x 24 3/4"



### Shelf, Stainless Steel, Flat Wire

**CLASSIC COOK & HOLD**  
[Part #SH-2326]

500-TH II

**PRODUCT DIMENSIONS**

13-1/4" x 19-1/2"  
[336 x 495]

**NEW COOK & HOLD**  
[Part #SH-47163]

500-TH

**PRODUCT DIMENSIONS**

13-4/5" x 19-1/2"  
[351 x 495]



## Probes

Sous Vide probes have additional sensors to more accurately measure product temperature.



**Probe, Sous Vide**  
[Part #PR-36576]

**PRODUCT DIMENSIONS**  
1000 mm

**COOK & HOLD MODELS**  
300-TH, 500-TH, 750-TH, 1000-TH,  
1200-TH, 1750-TH



**Probe, Standard Straight**  
[Part #PR-46999]

**PRODUCT DIMENSIONS**  
820 mm

**SMOKER MODELS**  
750-SK, 1000-SK, 1200-SK, 1750-SK

**COOK & HOLD MODELS**  
300-TH, 500-TH, 750-TH, 1000-TH,  
1200-TH, 1750-TH



**Probe, Standard T-Shape**  
[Part #PR-46998]

**PRODUCT DIMENSIONS**  
820 mm

**SMOKER MODELS**  
750-SK, 1000-SK, 1200-SK, 1750-SK

**COOK & HOLD MODELS**  
300-TH, 500-TH, 750-TH, 1000-TH,  
1200-TH, 1750-TH



**Wood Chips** Introduce bold flavor to your menu with real smoke from real wood chips available in a variety of flavors and package sizes. **(For Smoker Ovens Only)**



**SMOKER MODELS**

767-SK, 1000-SK/I, 1000-SK/II, 1767-SK, 750-SK, 1000-SK, 1200-SK, 1750-SK

**Cherry** North and South American Customers

2 lb Pack	Part #WC-22540
1.25 cu ft	Part #WC-22541
2.5 cu ft	Part #WC-37746

**Customers Outside of North and South America**

0.9 kg	Part #WC-49352
9 kg	Part #WC-49353



**SMOKER MODELS**

767-SK, 1000-SK/I, 1000-SK/II, 1767-SK, 750-SK, 1000-SK, 1200-SK, 1750-SK

**Apple** North and South American Customers

2 lb Pack	Part #WC-22542
1.25 cu ft	Part #WC-22543
2.5 cu ft	Part #WC-37747

**Customers Outside of North and South America**

0.9 kg	Part #WC-49354
9 kg	Part #WC-49355



**SMOKER MODELS**

767-SK, 1000-SK/I, 1000-SK/II, 1767-SK, 750-SK, 1000-SK, 1200-SK, 1750-SK

**Hickory** North and South American Customers

2 lb Pack	Part #WC-2828
1.25 cu ft	Part #WC-2829
2.5 cu ft	Part #WC-37749

**Customers Outside of North and South America**

0.9 kg	Part #WC-49358
9 kg	Part #WC-49359



**SMOKER MODELS**

767-SK, 1000-SK/I, 1000-SK/II, 1767-SK, 750-SK, 1000-SK, 1200-SK, 1750-SK

**Maple** North and South American Customers

2 lb Pack	Part #WC-22544
1.25 cu ft	Part #WC-22545
2.5 cu ft	Part #WC-37748



**SMOKER MODELS**

767-SK, 1000-SK/I, 1000-SK/II, 1767-SK, 750-SK, 1000-SK, 1200-SK, 1750-SK

**Beech**

**Customers Outside of North and South America**

0.9 kg	Part #WC-49356
9 kg	Part #WC-49357



# A partner **you can rely on.**

At Alto-Shaam we're relentlessly driven to design and manufacture products that perform flawlessly in the most demanding conditions to give operators confidence and consistency in every meal. And our team is just as committed to providing industry-leading service and support. From installation consultation to equipment training to around the clock, every day technical assistance to culinary support—you can trust that we are here for you.



## Full Line of Commercial Kitchen Equipment:

- Combination Ovens
- Cook & Hold Ovens
- Food Wells
- Heated Holding
- Smokers
- Quickchillers™
- Rotisseries
- Carving Stations
- Merchandisers & Display Cases
- Multi-Cook Ovens



ALTO-SHAAM®